



EDUCATE TOGETHER
SECONDARY SCHOOL



**WELCOME
CLASS OF 2032!**



WELCOME TO OUR OPEN EVENING!

- Visit learning spaces and practical rooms and learn about our school - You don't have to go in any order - if you find that a room is full, just move on and come back
- Activities for students in each room
- Take part in the Scavenger Hunt
- Chat to our subject teachers and Student Support Assistants (SSAs)
- Meet our wonderful students
- Enjoy performances from the school choir
- Have some refreshments (don't forget to dispose of your cup in the compost bin near the coffee station!)

OUR SCHOOL, OUR VISION & OUR ETHOS





OUR SCHOOL

- Opened in 2019 with 48 students
- 384 students enrolled for 2025-2026
- We have two autism classes (12 students enrolled)
- Will grow to 430 pupils in current accommodation
- Will grow to 1000 pupils in new build
- 72 first year mainstream places available for 2026-2027 (3 classes of x 24)
- Currently students in all year groups
- Last year, we had our first group of 6th Years who completed their LC exam in June 2025



GETSS: AN EDUCATE TOGETHER SCHOOL



In Educate Together schools, everyone will learn in a student-centred, inclusive, democratic, co-educational setting that is committed to **enabling and supporting each student to achieve their full potential** while at the same time **preparing them to become caring and active members of a culturally diverse society.**



WHAT DOES THIS LOOK LIKE?

- First names for all
- Respect and kindness
- No uniform (but we have a dress code!)
- Student voice/student participation
- Partnership with parents/guardians
- Innovative teaching and learning
- Creativity and innovation
- Authentic inclusion
- Sustainability and social responsibility



THE FUTURE OF OUR SCHOOL

WHERE WILL WE BE SITUATED?

Current Accommodation: Newtownsmith

Department of Education have set upper limit of 72 students for 2026/2027

Permanent Accommodation:

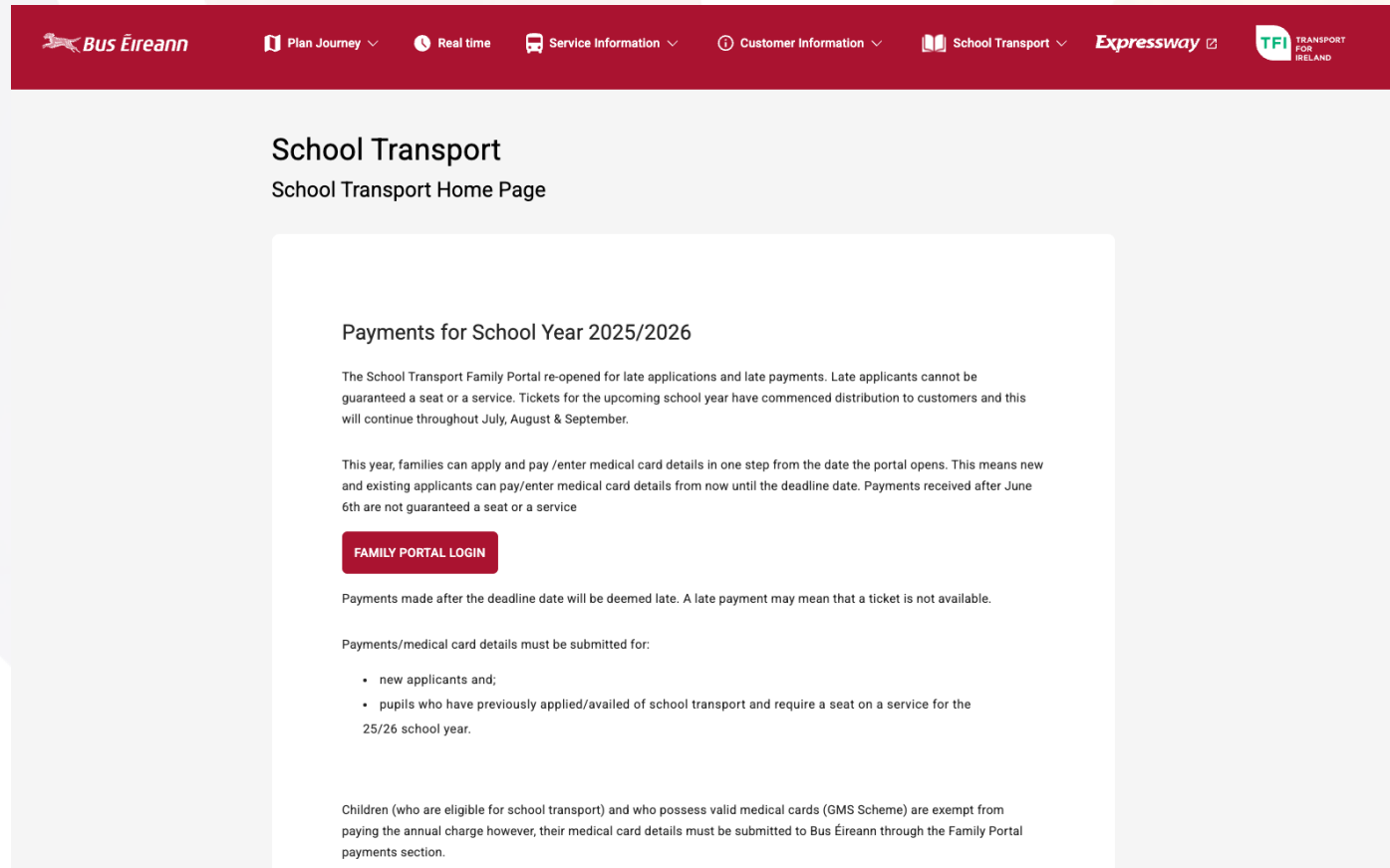
- Permanent site has been confirmed at Garraun, Oranmore (Very close to train station which is currently being developed)
 - New build to facilitate 1000 students
 - Provisional timeline - 6 years (2031)
- Permanent location will be accessible to all sides of school planning area via school and public transport. This is a priority of Department of Education.



SCHOOL TRANSPORT

[HTTPS://WWW.BUSEIREANN.IE/SCHOOLTRANSPORT](https://www.buseireann.ie/schooltransport)

- Portal opens in April
- Routes depend on demand
- Apply via Bus Éireann website



The screenshot shows the Bus Éireann website's School Transport section. The header is dark red with the Bus Éireann logo and navigation links: Plan Journey, Real time, Service Information, Customer Information, School Transport, Expressway, and TFI Transport for Ireland. The main heading is 'School Transport' with the subtitle 'School Transport Home Page'. The content area is white and features a section titled 'Payments for School Year 2025/2026'. This section contains two paragraphs of text and a red button labeled 'FAMILY PORTAL LOGIN'. Below the button, there is a warning about late payments and a list of conditions for payment submission. At the bottom, a paragraph explains exemptions for children with valid medical cards.

Bus Éireann Plan Journey Real time Service Information Customer Information School Transport Expressway TFI TRANSPORT FOR IRELAND

School Transport

School Transport Home Page

Payments for School Year 2025/2026

The School Transport Family Portal re-opened for late applications and late payments. Late applicants cannot be guaranteed a seat or a service. Tickets for the upcoming school year have commenced distribution to customers and this will continue throughout July, August & September.

This year, families can apply and pay /enter medical card details in one step from the date the portal opens. This means new and existing applicants can pay/enter medical card details from now until the deadline date. Payments received after June 6th are not guaranteed a seat or a service

FAMILY PORTAL LOGIN

Payments made after the deadline date will be deemed late. A late payment may mean that a ticket is not available.

Payments/medical card details must be submitted for:


- new applicants and;
- pupils who have previously applied/availed of school transport and require a seat on a service for the 25/26 school year.

Children (who are eligible for school transport) and who possess valid medical cards (GMS Scheme) are exempt from paying the annual charge however, their medical card details must be submitted to Bus Éireann through the Family Portal payments section.



WHAT WILL THE DAY LOOK LIKE?

- School opens at 8.00am and **lessons begin at 8.30am**
- Hour-long classes
- Students move from room to room
- No bells except at breaks
- Morning break: 15 mins; Lunch-time: 30 or 40 mins
- Senior Students can leave the premises at lunch-time. Juniors stay on site
- No canteen on site – students bring a healthy lunch!
- Our classrooms are called Learning Spaces (LS1, LS2, etc.)

| |  | Tutor 8.30 – 8.45 | 1 8.45 – 9.45 | 2 9.45 – 10.45 | Break 10.45 – 11.00 | 3 11.00 – 12.00 | 4 12.00 – 1.00 | Lunch & Clubs | 5 1.40 – 2.40 | 6 2.40 – 3.40 Mon & Wed |
|------------------|--|-----------------------------|-------------------------|--------------------------|-------------------------------|---------------------------|--------------------------|--------------------------|-------------------------|--|
| Monday | | | | | | | | 1.00 – 1.40 | | |
| Tuesday | | | | | | | | 1.00 – 1.30 | 1.30 – 2.30 | Clubs & Active Study 2.30 – 3.30 |
| Wednesday | | | | | | | | 1.00 – 1.40 | | |
| Thursday | | | | | | | | 1.00 – 1.30 | 1.30 – 2.30 | Clubs & Active Study 2.30 – 3.30 |
| Friday | | | | | | | | 1.00 – 1.30 | 1.30 – 2.30 | School finishes at 2.30 Friday |



WHAT WILL THE LEARNING LOOK LIKE?

- **Active Learning** – discussions, problem-solving, hands-on tasks
- **Creativity & Innovation** – critical thinking and risk-taking, enhanced by use of technology
- **Collaboration** – teamwork, groupwork, pair work and peer support
- **Positive Relationships** – safe and respectful atmosphere, supportive connections
- **Engaging Curriculum** – real-world connections, student interests, Global Citizenship Education
- **Student Voice & Choice** – input and decisions in learning
- **Inclusive Practices** – supporting all learners
- **Sense of Community** – everyone feels valued, celebration of successes
- **Feedback & Reflection** – constructive guidance and self-assessment
- **Phone-Free Environment** – focused, distraction-free learning



SCHOOL SUPPORTS & STAFF



SUPPORT TEAM

- Sarah Molloy principal@galwayetss.ie
- Sinéad Conlon dp@galwayetss.ie
- Noreen Cooley admin@galwayetss.ie
- Guidance Counsellor: Ann Marie Greene amgreene@galwayetss.ie
- AEN Coordinator: Katriona Woods kwoods@galwayetss.ie



Currently 39 teaching staff, 9 Student Support Assistants (SSAs), a school administrator and a caretaker.





PEANUT – OUR COMMUNITY DOG



- One of over 20 schools participating in the Community Dog Programme
- Run by the Irish Guide Dogs for the Blind
- Joined the team in August 2023
- Peanut works with individual students and small groups to support mental health, emotional wellbeing and reduce stress & anxiety





WORKING WITH PEANUT

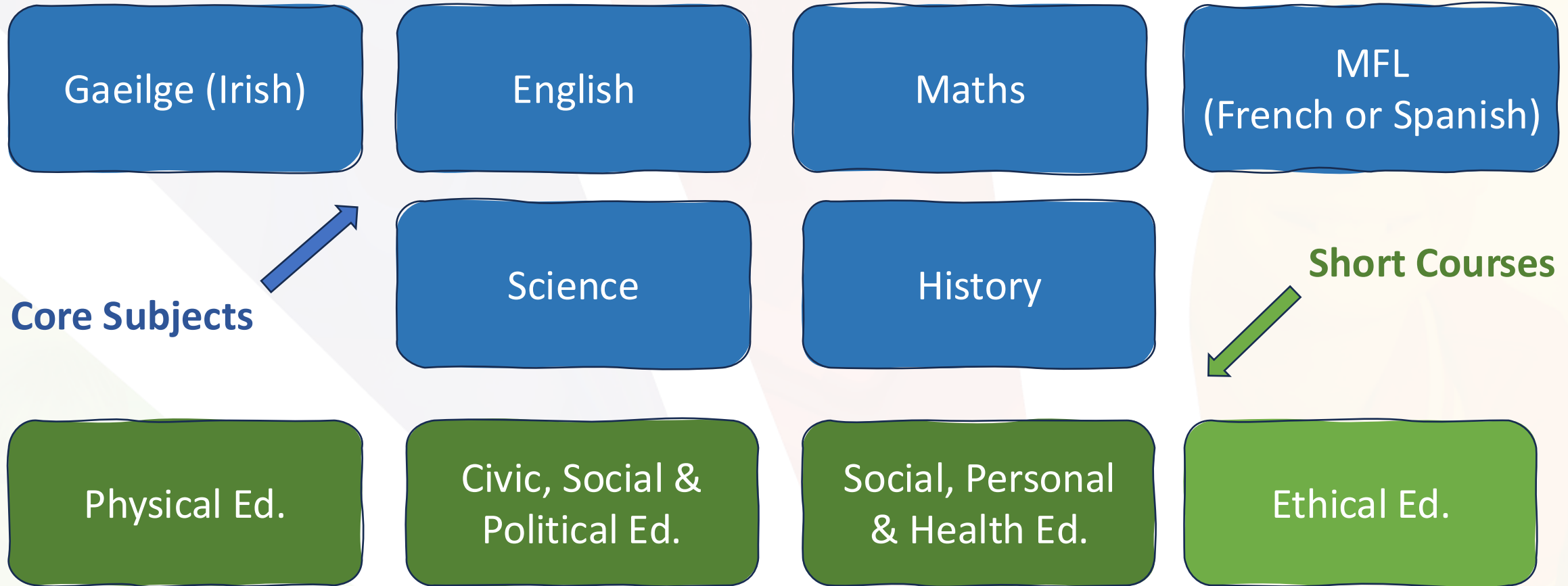
- Handled and cared for by one of our SSAs, Jill.
- She is trained to not approach or interact with students, unless instructed to do so by the handler. Peanut will always be with a handler and never off a lead on school premises.



PROGRAMMES & CURRICULUM



JUNIOR CYCLE SUBJECTS



ETHICAL EDUCATION



- Specific to Educate Together schools
- 1 hour per week
- Invites students and teachers to engage with **issues and problems facing society** and aims to develop the skills of critical thinking, discussion and debate
- Involves exploring **different worldviews and beliefs**, considering ethical dilemmas and the process of **ethical decision making (deciding between right and wrong)**
- **9 Strands**: Values; Making Moral and Ethical Decisions; Beliefs and Worldviews; Different Teachings and Perspectives; Diversity in Ireland, Migration; Power and Participation; Gender Equality; Global Citizenship Education

JUNIOR CYCLE OPTION SUBJECTS

Options Taster Programme until October of 1st Year - Choose Two



Visual Art

Applied
Technology

Graphics

Home Economics

Business

Music

Geography

See GETSS.ie or curriculumonline.ie for further information

ADDITIONAL SHORT COURSE OPTIONS



Taster during Induction – students have chosen one already

1 hour p/w, 1st – 3rd Year

Coding



Artistic
Performance



Climate Action



Negotiated
Learning

Only available at GETSS!



EDUCATE TOGETHER
SECONDARY SCHOOL

TRANSITION YEAR

- Compulsory in GETSS
- **One-year programme** between Junior Cycle & Senior Cycle
- Focus on **personal development, social skills & independence**
- Opportunities for **work experience, trips, projects & community involvement**
- Encourages creativity, teamwork & self-confidence
- Offers **subject sampling** to help with Leaving Cert choices
- Builds **key life skills** for future study, work & adult life



SENIOR CYCLE/LEAVING CERT SUBJECTS

Core subjects:

Gaeilge (Irish)

English

Maths

MFL
(French or Spanish)

Option subjects currently available:

Physics

Technology

Geography

Music

Chemistry

DCG (Graphics)

Business

New! Drama, Film &
Theatre Studies

Biology

Computer Science

History

Other subjects:
PE, Ethical Ed,
Careers & SPHE

Home Economics

Art

Politics & Society

ADDITIONAL SENIOR CYCLE PROGRAMMES



Leaving Certificate Vocational Programme (LCVP)

- Enhances the traditional Leaving Cert
- Includes **Link Modules** and work experience
- Focus on enterprise & the world of work
- Builds teamwork, communication & problem-solving skills
- Recognised by employers, colleges & universities
- Up to **66 CAO points** available



Leaving Certificate Applied (LCA)

- A practical, hands-on alternative to the traditional Leaving Cert
- Focus on **skills for life, learning, and work**
- Two-year programme with continuous assessment
- Mix of subjects: general education, vocational preparation & practical work experience
- Emphasis on **teamwork, projects, and real-world learning**
- Prepares students for work, apprenticeships, PLC courses & further training

EXTRA-CURRICULAR

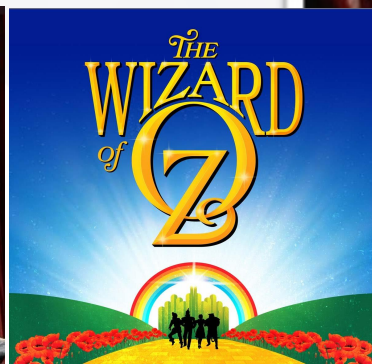
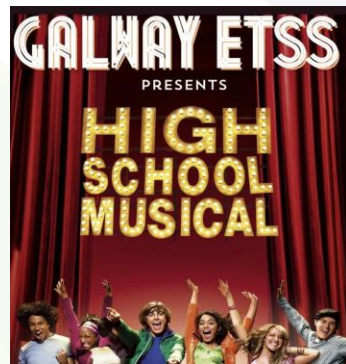
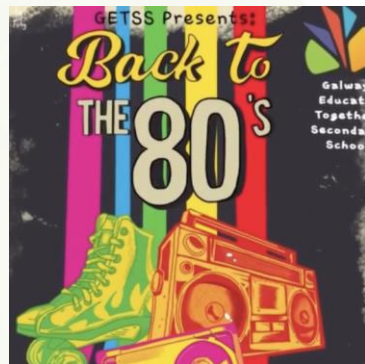


SPORT AT GETSS

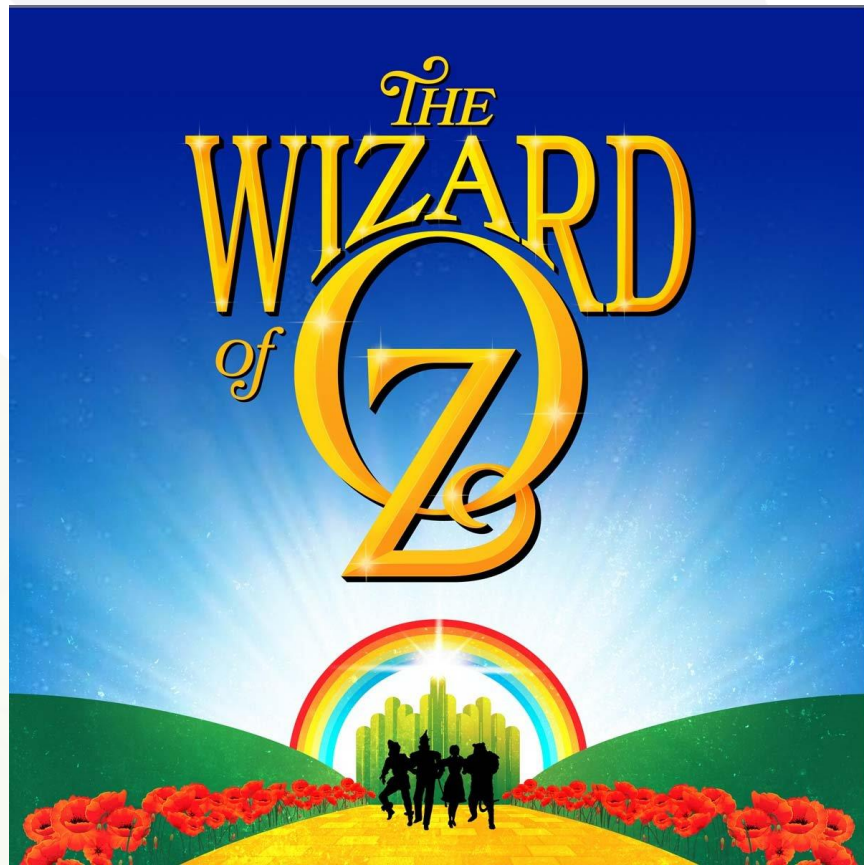


Soccer
Volleyball
Athletics
Basketball
Chess

MUSICAL TRADITION



THIS YEAR'S PRODUCTION



A date for your diaries!

This year we're *over the rainbow* excited to present
The Wizard of Oz!

Follow the yellow brick road straight to our stage!

November 27th - 29th

Extra-Curricular Schedule 2025-2026

| Time | Monday | Tuesday | Wednesday | Thursday | Friday |
|-----------------------------------|---|---|--|--|---|
| 8.00 - 8.30 | | Crafts Club with Donna Home Ec Room | | | |
| Lunch time (Bring your lunch!) | Games Club with Ann Marie LS7 | Games Club with Ann Marie LS7 | Games Club with Ann Marie LS7 | Games Club with Ann Marie LS7 | Games Club with Ann Marie LS7 |
| | Walking Club with Kevin (Meet at the office) | Walking Club with Tara N (meet at the office) | Walking Club with Esther (meet at the office) | Walking Club with Ann Marie (meet at the office) | Walking Club with Katriona (meet at the office) |
| | Literature & Lyrics with Rowie & Orla LS2 | Pride Club Location TBC | Book Club with Sarah O Library Space | Green Schools with Aoife LS1 | |
| | GCE Club with LeighAnn LS7 (Global Citizenship Education) | | iPad Clinic with Nora Blue Lab | | |
| | Choir/Music Club with Tara B Music Room | | | | |
| 2.30-3.30 | | Boys's Soccer with Martin & Kevin Meet at Sports Hall | | Girls' & Boys' Volleyball with Niamh K and James Sports Hall | |
| | | Boys' & Girls' Basketball with Gary Sports Hall | | Coding & Robotics with Jake Computer Science Room | |
| | | Science Club with Megan Blue Lab | | Dungeons & Dragons Club with Rosaline LS2 | |
| | | Maths Club with Michelle LS6 | | Table Tennis Club with Hazel GP Area | |
| | | Languages Club with Esther & Laura LS3 | | Tech Project Support with Evan Tech Room | |
| | | Tech Project Support with Evan Tech Room | | Home Learning Club with Marta LS1 | |
| | | Home Learning Club with Tara N LS1 | | Debating Club TBC | |
| 3.40 - 4.40 | Badminton with Niamh S Sports Hall | | Girls' Soccer with Neasa Sports Hall | | |
| | | | Strength & Conditioning with Beth Nurture Room | | |

TECHNOLOGY-MEDIATED LEARNING



TECHNOLOGY-MEDIATED LEARNING



Distinguished
School



- Individual devices – all students at GETSS use iPads to access lessons and materials
- Purchased by parents through a third party
- Microsoft Office 365 - Teams and Outlook for Communication, OneNote for lesson content
- **Cost €600 approx** (not covered by DEY book scheme)
- Payment Plan available



The technology is not the focus of the learning rather the medium through which students learn



TECHNOLOGY-ENHANCED LEARNING

We use technology to enhance the learning and develop students' skills such as:

- ✓ *Digital literacy*
- ✓ *Collaboration*
- ✓ *Creativity*
- ✓ *Organisation*
- ✓ *Managing information*



FLEXIBILITY AND INCUSION



Universal Design for Learning (UDL) is about teaching in ways that help every child learn in the way that works best for them.

Students can:

Learn in Different Ways

Videos, text, audiobooks, interactive apps—students choose what works best.

Show What They Know

Write, record, draw, or create presentations to express understanding.

Get Extra Support

Tools like text-to-speech, speech-to-text, and visual organizers help every learner succeed.

iPads make learning more flexible, inclusive, and personalized for every student.

SUPPORTING LEARNING FOR EVERY STUDENT

Representation

Student Expression

Student Engagement

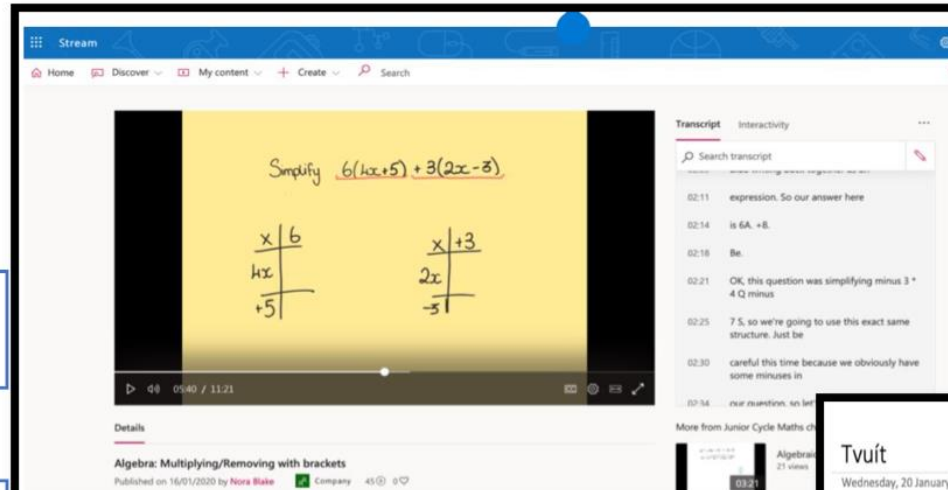


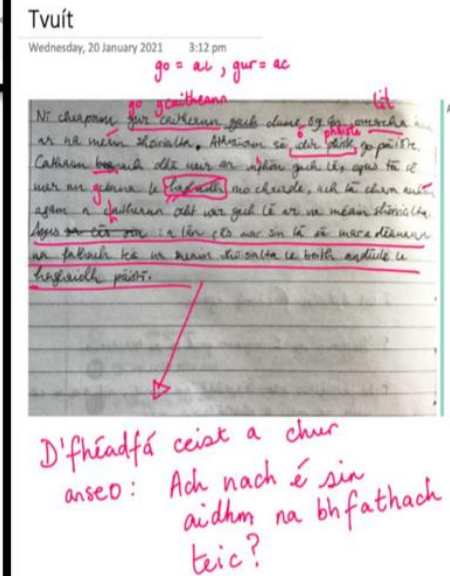
Figure 6- Work examples in video form with transcript

Universal
Design
For Learning



The use of apps such as Menti and Padlet allow students to share ideas and answers collectively.

Work is submitted to Assignments and feedback is given. Students make these changes to their work and submit to Assignments again.



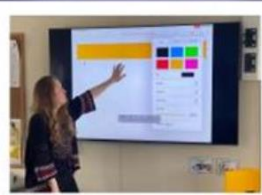
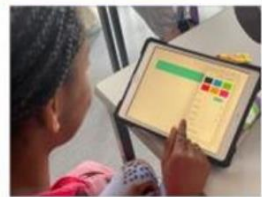
Students have the choice to present their work digitally, in video format or they can take a photo of their copybook and upload to OneNote or Assignments.

Galway Educate Together Secondary School



Our School

Galway Educate Together Secondary School is a developing school which opened its doors in 2019. Following the Educate Together ethos, our [vision](#) is to foster a love of learning and to build an inclusive community through sustainable practices that revolve around the building of respectful relationships and democratic participation. The activation and engagement of authentic [student voice](#) is central to our planning and practice.



Vision

The culture of learning in our school centres around the pillars of Collaboration, Creativity, Flexibility and Critical Thinking.

Having 1:1 iPads allows us to engage the students in teaching and learning activities which support this [progressive vision](#). In addition to this, using digital technology gives students the confidence to communicate, to [collaborate](#), to [reflect](#) and to emerge as learners who will be able to respond and adapt to the ever changing world around them. [Our staff actively facilitate](#) students to express their views but they also give audience to that voice and allow it to influence future learning experiences. We encourage our students and staff not to be afraid of making mistakes, to be open to trying new things and to actively seek out new opportunities in order to reach their full potential.



At GETSS we activate authentic student voice by adopting Laura Lundy's Model of Participation as illustrated above.

Demographics

- Developing School Year 3
- Number of Students: 207
- Co-Educational
- Year Groups 2022/23; 1st, 2nd, 3rd year and Transition Year
- Number of Teachers: 16
- Number of SSA's: 5
- Currently situated in temporary accommodation

Apple Technology

- 1:1 Apple iPad devices
- Apple TV in every classroom
- Teachers equipped with Apple Pencils

Learning



Collaboration – iPads enable our school community to work together purposefully and effectively in an efficient manner which allows us to feel supported and nurtured in our learning journey. Through our [Project Based Learning](#) (PBL) approach [student voice](#) is activated.



Creativity – iPads open up the learning so that students can express themselves in a variety of different ways that are unique to their own creative flair whilst supporting [innovation and exploration](#).



Flexibility and Inclusion – iPads support our Universal Design for Learning approach. The UDL framework recognises that all students are unique individuals that learn in different ways and it guides us to provide a more flexible, inclusive approach to learning and assessment to cater for this diversity. Having one to [one devices gives endless possibilities](#) in the three areas of the [UDL approach](#) – Representation, Expression and Engagement.



Supporting Critical Thinking through Feedback – iPads allow us to experience [structured interactions](#) through a variety of mediums that empower students to understand and take responsibility for their own learning by identifying their strengths and their areas for improvement.



Success

Through our School Self Evaluation (SSE) process, feedback suggests that student engagement is heightened and enhanced by the use of iPads. Our [students, teachers](#) and [parents](#) have verified their satisfaction through the channels of focus groups and surveys and they can explicitly identify how the iPads help students directly manage themselves and their learning. The [feedback](#) also speaks clearly in terms of the ease of use, the ability to easily cater for the needs of all students, the robustness of the iPads as well as the endless opportunities for creative engagement.



What Next?

As a developing school which will rapidly grow over the next ten years we need more sustainable practices. For example much of our data gathered from our SSE process is opinion based, we plan to review and refine our collection of data so that we have a balance of quantitative and qualitative. This will allow us to easily identify areas for improvement.

In addition to this, we are committed to develop learning autonomy. To support this, we have developed a [template](#) that equips students in their research process to be more robust in their critical thinking skills.

We continue to strive to increase engagement with student voice by empowering them to make decisions about and take responsibility for their learning in order to improve learner outcomes.

Curious about the iPads?

Ask teachers and students in our classrooms to show you how they are used for learning.

<http://galwayetss.ie/page/Apple-Distinguished-School/60789/Index.html>



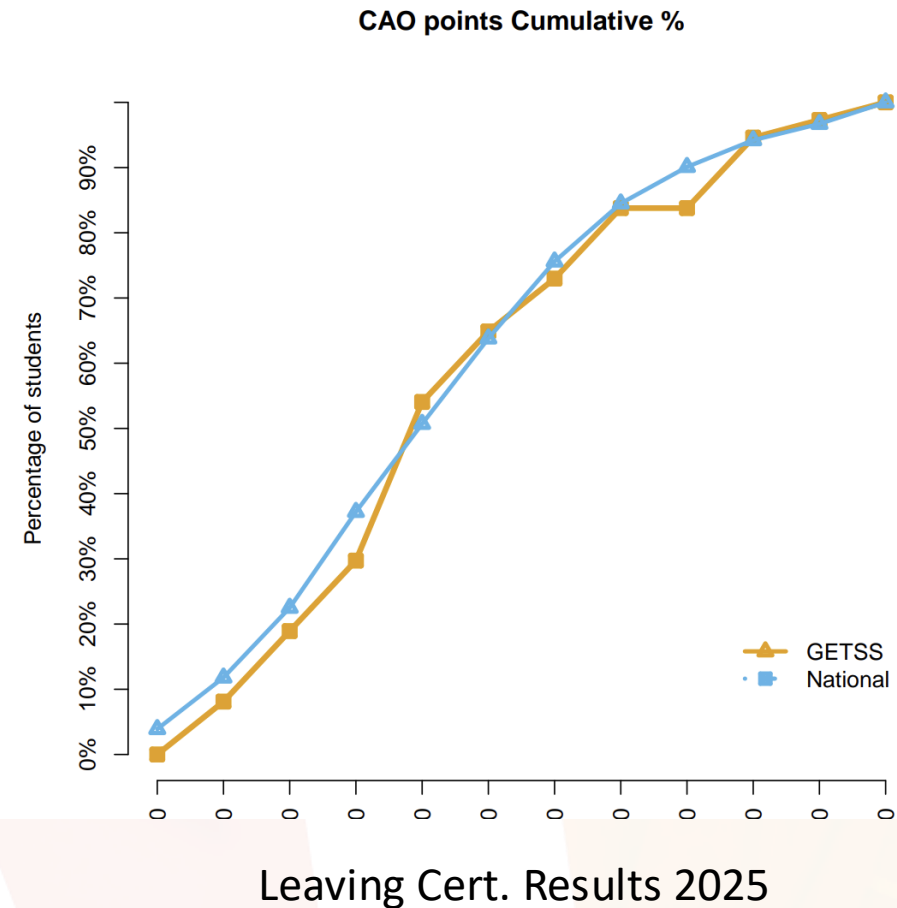
Distinguished School

OUR PRIORITIES

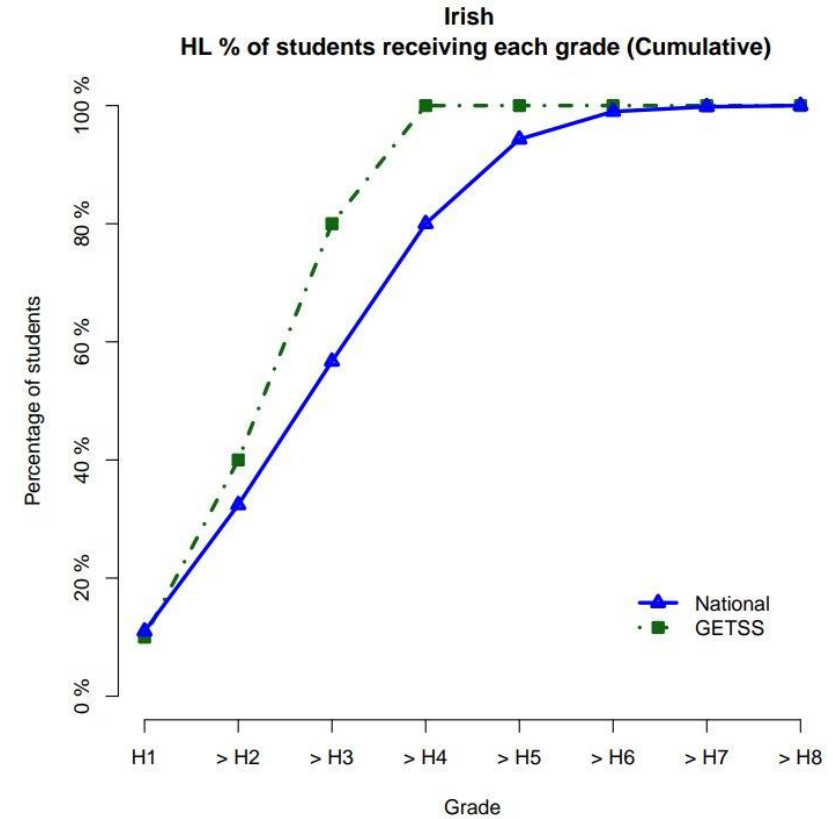
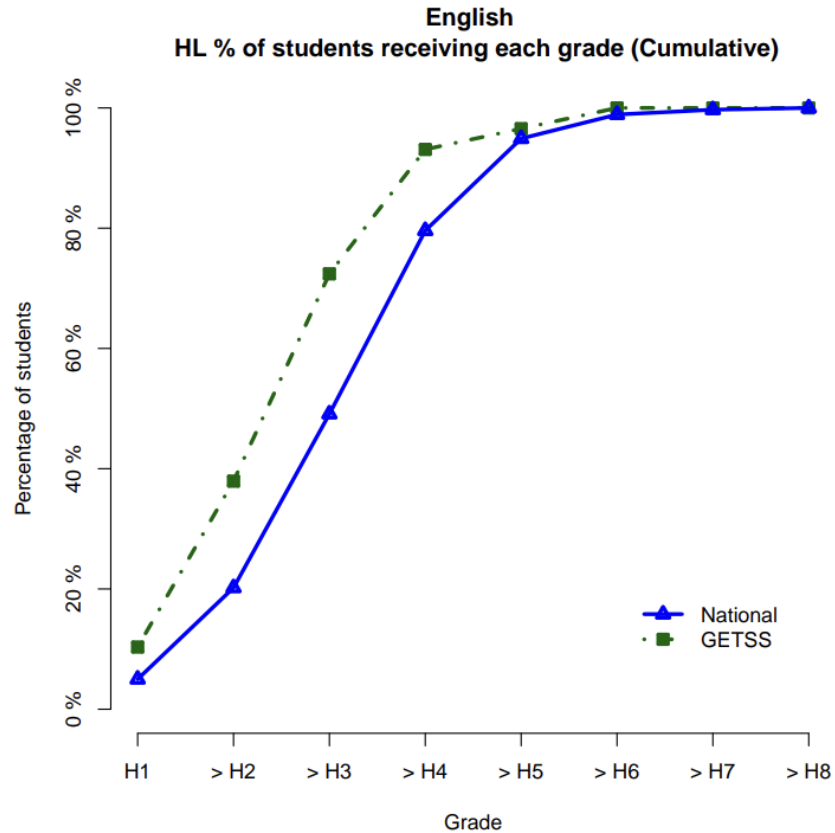


ACADEMIC SUCCESS FOR STUDENTS

- High-quality teaching and learning, and academic excellence are priorities, helping every student reach their potential, and succeed with confidence.
- Data from Athena Analytics, our academic tracking software, shows that all of our students are achieving their full academic potential.

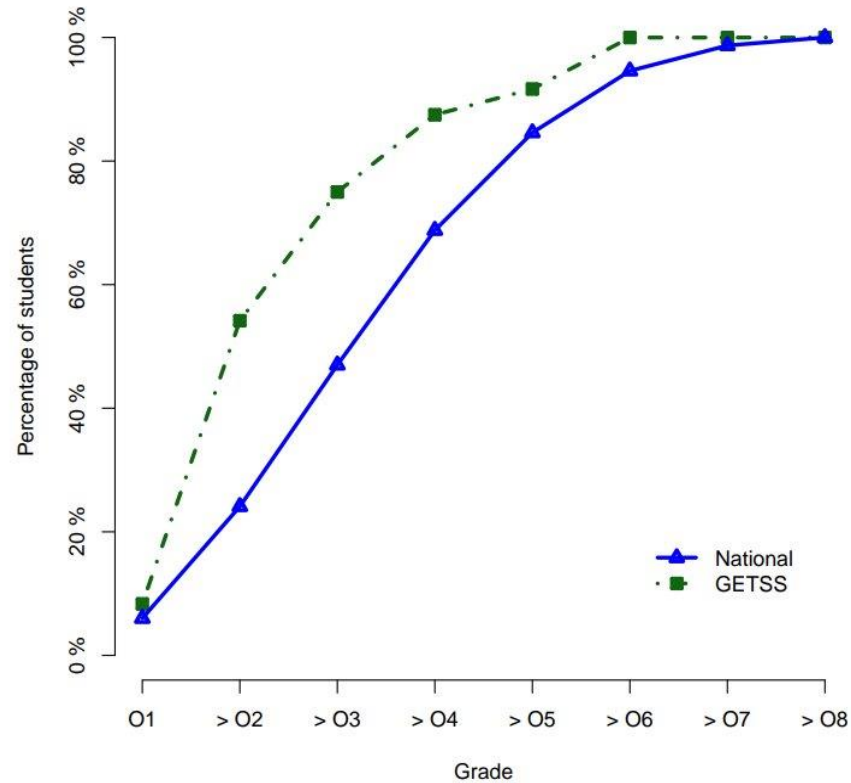


ACADEMIC SUCCESS FOR STUDENTS

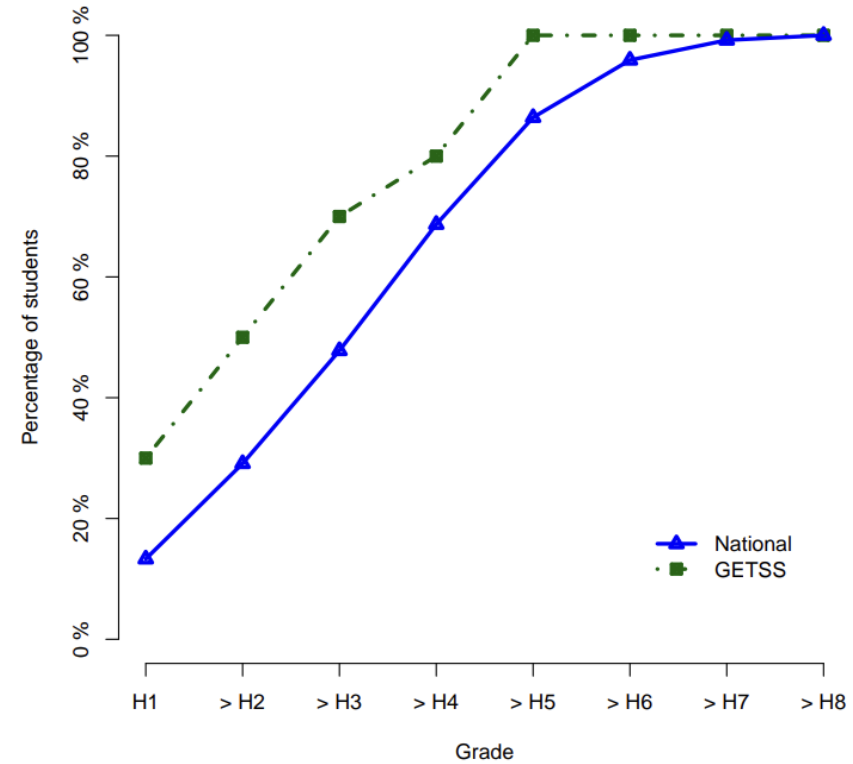


ACADEMIC SUCCESS FOR STUDENTS

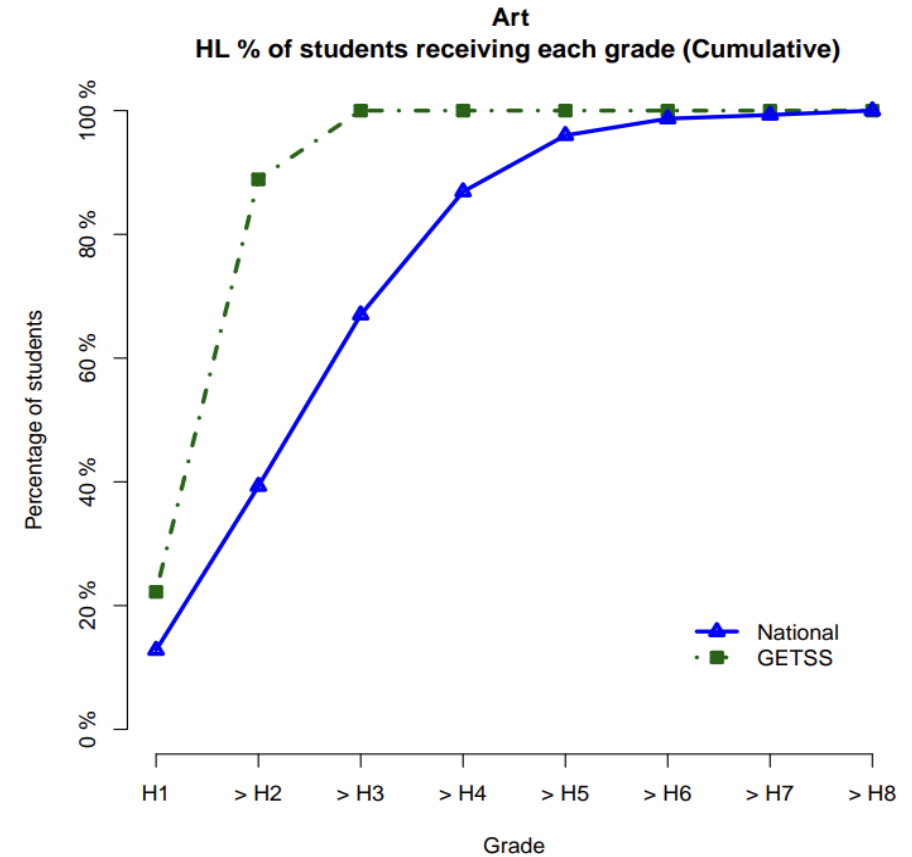
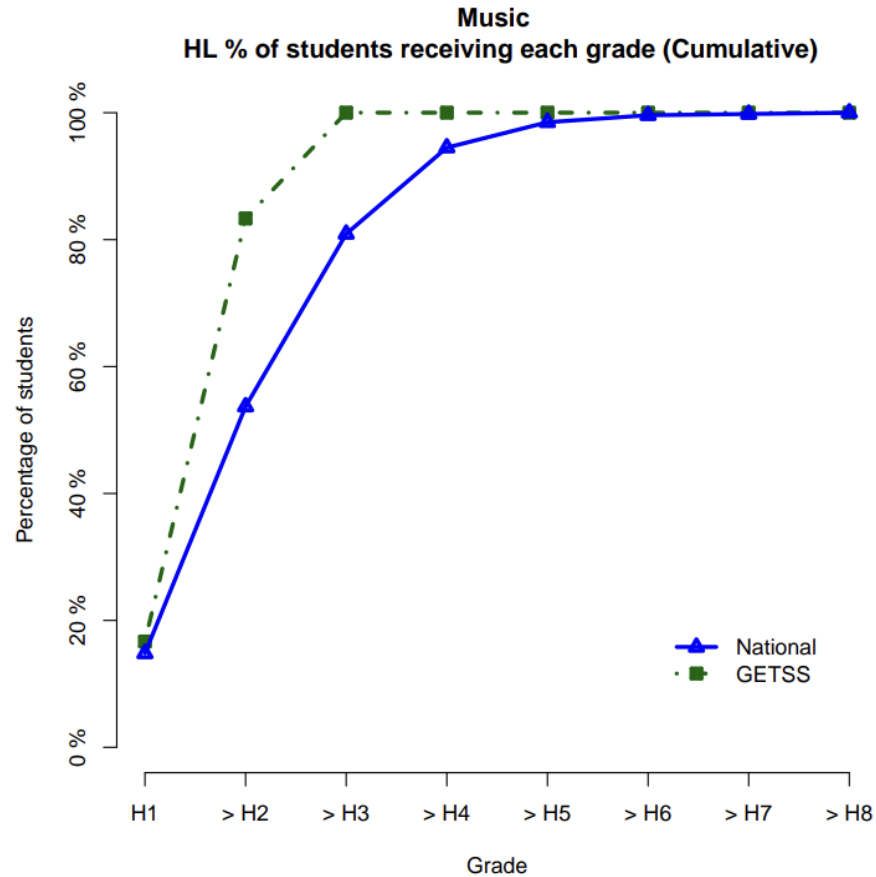
Mathematics OL % of students receiving each grade (Cumulative)



Spanish HL % of students receiving each grade (Cumulative)



ACADEMIC SUCCESS FOR STUDENTS





galwayetss 🎉 Leaving Cert Results Day 2025 🎉
Congratulations to the class of 2025 on getting their Leaving Certificate Results today! We are so proud of the high academic standards you have set as our first group of Leaving Certificate students!

As you move onto the next steps of your life, whether that's studying, training, working or travelling, the staff at GETSS wishes you every success and happiness in the future!

Edited · 4w



🌐 Liked by [educate.together](#) and 107 others
August 22

😊 Add a comment...

Post

STUDENT DESTINATIONS – LC 2025



OLLSCOIL NA
GAILLIMHE
UNIVERSITY
OF GALWAY



UNIVERSITY OF
LIMERICK
OLLSCOIL LUIMNIGH



Trinity
College
Dublin

The University of Dublin



**University
of Brighton**



Ollscoil
Teicneolaíochta
an Atlantaigh

Atlantic
Technological
University



UCD
DUBLIN



FURTHER EDUCATION
GCC
Coláiste Pobail na Gaillimhe
Galway Community College



MIC
MARY IMMACULATE COLLEGE
COLÁISTE MUIRE GAN SMÁL



LONDON
METROPOLITAN
UNIVERSITY



**ATLANTIC
AVIATION
GROUP**

MRO | CAMO | DOA | TRAINING

City of Dublin
FET College

Ballyfermot, Southwest Campus
Ballyfermot Road | Kylemore Road



**EDUCATE TOGETHER
SECONDARY SCHOOL**

STUDENT DESTINATIONS – LC 2025

🎓 Majority progressed to university (Level 8) degrees:



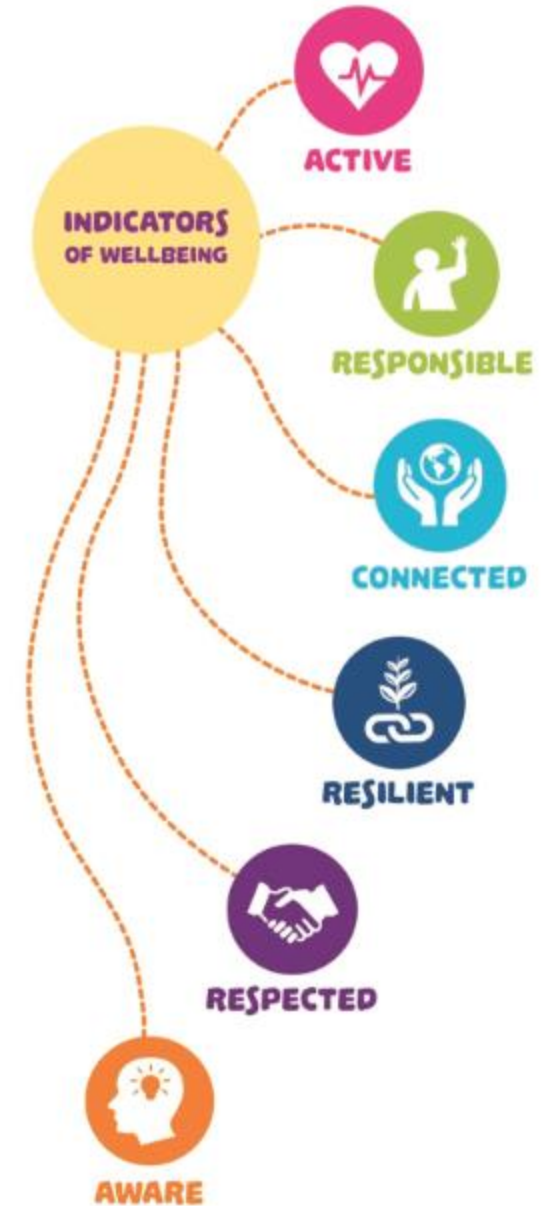
- *Bachelor of Architecture (Hons)*
- *Bachelor of Arts (Arts with Children's Studies)*
- *Bachelor of Arts (Drama and Theatre Studies)*
- *Bachelor of Arts (English and Creative Writing)*
- *Bachelor of Arts (Musical Theatre)*
- *Bachelor of Business (Hons)*
- *Bachelor of Science (Computing & Software Development)*
- *Bachelor of Science (Criminology with Psychology)*
- *Bachelor of Commerce (Global Experience)*
- *Bachelor of Science (Food Science and Health)*
- *Bachelor of Law (Human Rights)*

STUDENT WELLBEING

Happy, healthy students learn best. Supporting emotional, social, and mental health is a priority for the school.

Wellbeing programs and initiatives include:

- Kindness & respect
- Clubs and extracurricular
- Bí Cineálta Anti-bullying Policy
- Amber School Award
- Inclusive practices
- Themed weeks
- Healthy Eating (water only)
- Whole-school Restorative Approach



RESTORATIVE PRACTICE

Building Positive Relationships and Supporting Positive behaviour

What is Restorative Practice?

Restorative Practice aims to build positive relationships and friendships. It also help to deal with conflict and arguments, if they do occur, in a healthy way that moves us away from blame and attack to connection and healing.

In our school we will use the RESPECT values to help bring Restorative Practice to life.



SUSTAINABILITY

- Reducing waste: waste management system - recycling, compost bins, etc.
- Avoiding single-use plastics
- Avoiding disposable cups
- Eco-friendly transport encouraged: walk, cycle, carpool, buses, etc.
- Sustainability lessons, Green Schools, Climate Action projects
- Responsible purchasing: buy local, recycled, and eco-friendly products
- Mindful use of paper



say **NO** to plastic!



Green-Schools



SCHOOL OF SANCTUARY

Welcome, Inclusion, Diversity, Safety, Sanctuary

Recognition as a school that is committed to creating a safe, welcoming and inclusive environment that benefits everybody, including anyone in its community who is seeking sanctuary.

Tonight - students wearing badges with their languages – please approach them!

- PBL (project-based learning) workshops and events in the areas of identity and anti-racism
- Irish Education System information (for families who may be unfamiliar with the Irish context)
- www.getss.ie/ Google Translate
- Curricular elements (Ethical Ed, CSPE, Art and English)
- Turning the Tide campaign - Traveller Movement (intercultural workshops for 1st Years)
- Various student-led campaigns around inclusion



Schools of Sanctuary Ireland

STUDENT PARTICIPATION/VOICE

- **Student Council** - elected representatives from each year
- **6th Year Prefects** - senior students as role models, assisting at school events
- **Peer Mentoring** - older students support 1st years
- **Formal Programmes** - e.g. *Foróige Leadership for Life*, GAA Future Leaders, LIFT
- **Working Groups/student committees** - Green Schools Team, Amber Flag Team, School of Sanctuary Ambassadors, GCE Team

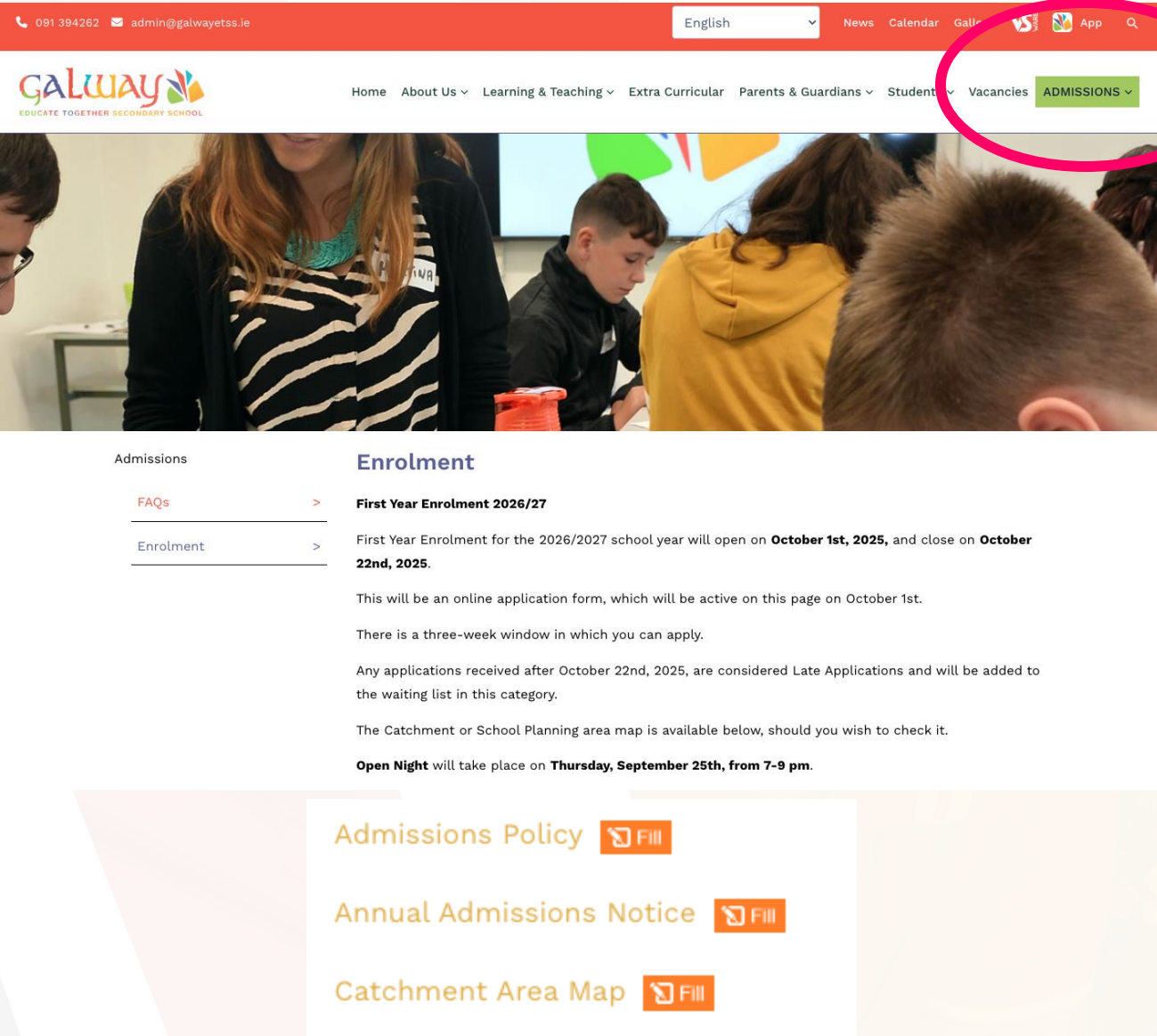


HOW TO APPLY



HOW TO APPLY

- Online application form on website
- Application Window **October 1st** to **October 22nd**
- If oversubscribed, a lottery system applies
- Late applications will be added to the waiting list in the relevant category
- Order of Categories:
 1. *Siblings*
 2. *School Planning Area (See map)*
 3. *Outside Planning Area*
 4. *Late Applications*
- All details in the Admissions Policy & Admissions Notice on website (www.galwayetss.ie)



The screenshot shows the website for Galway Educate Together Secondary School. The header includes contact information (091 394262, admin@galwayetss.ie), a language dropdown (English), and navigation links (News, Calendar, Gallery, App). The main navigation bar features links for Home, About Us, Learning & Teaching, Extra Curricular, Parents & Guardians, Student, Vacancies, and a highlighted **ADMISSIONS** link. Below the navigation bar is a large image of students in a classroom. The main content area is titled 'Admissions' and includes a sidebar with links to 'FAQs' and 'Enrolment'. The 'Enrolment' section is expanded, showing 'First Year Enrolment 2026/27'. The text states that the First Year Enrolment for the 2026/2027 school year will open on **October 1st, 2025**, and close on **October 22nd, 2025**. It mentions that there will be an online application form active on October 1st, with a three-week window for applications. Late applications received after October 22nd, 2025, will be added to the waiting list. The Catchment or School Planning area map is available for checking. An **Open Night** will take place on **Thursday, September 25th, from 7-9 pm**. At the bottom, there are links to the 'Admissions Policy', 'Annual Admissions Notice', and 'Catchment Area Map', each with a 'Fill' button.

**FIND OUT MORE ABOUT
LIFE AT GETSS**



Keep up to date and see what life is like in GETSS – Follow us!

FIND US ON SOCIALS!



www.galwayetss.ie



@galwayetss



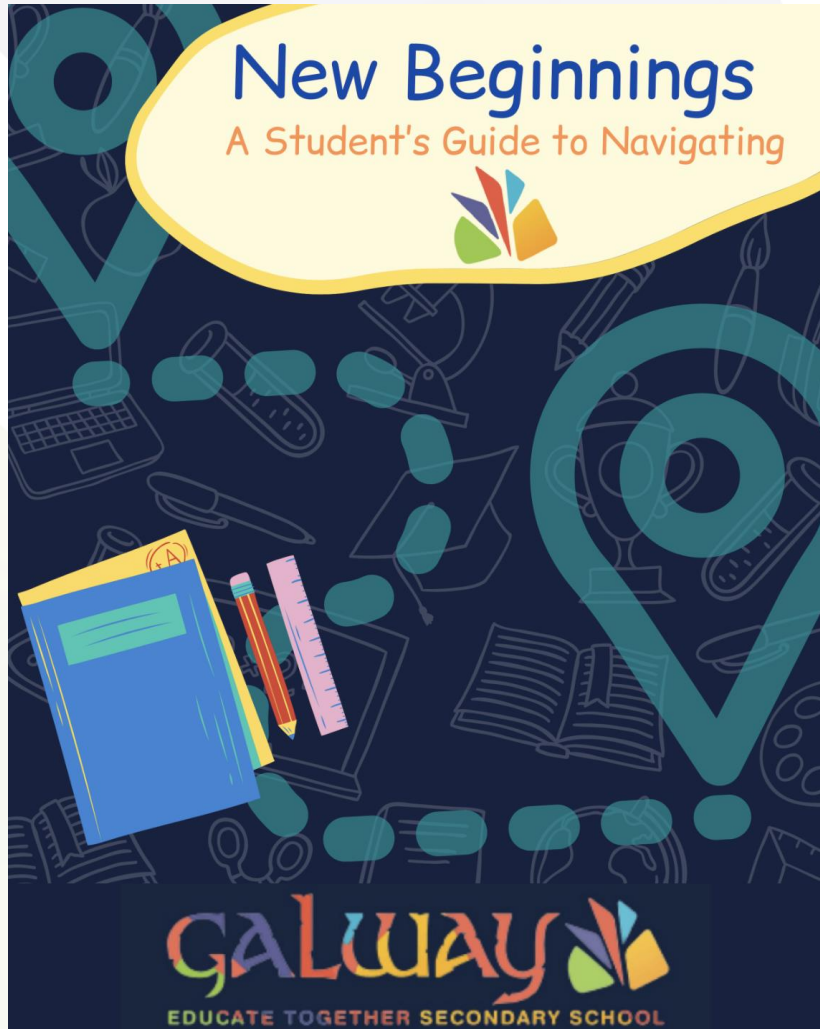
Galway Educate Together
Secondary School



TRANSITION BOOKLET

[Link to Transtion Booklet](#)

Available in multiple languages



- *Mandarin*
- *Hindi*
- *Latvian*
- *Lithuanian*
- *Polish*
- *Portuguese*
- *Spanish*
- *Ukrainian*
- *English*



ENJOY THE EVENING!

- Visit learning spaces and practical rooms and learn about our school - You don't have to go in any order - if you find that a room is full, just move on and come back
- Activities for students in each room
- Take part in the Scavenger Hunt
- Chat to our subject teachers and Student Support Assistants (SSAs)
- Meet our wonderful students
- Enjoy performances from the school choir
- Have some refreshments (don't forget to dispose of your cup in the compost bin near the coffee station!)